



A Woman-Owned Small Business

3010 South Tech Blvd.
Miamisburg, Ohio 45342
P: 1.877.CDI.8771
F: 937.746.9710
info@cdinc.us
www.connectivedesign.com

MIL-SPEC Connectors

- ▶ MIL-DTL-26482 Series I Solder (MS3110-MS3119)
- ▶ MIL-DTL-26482 Series I Crimp (MS3120-MS3128)
- ▶ MIL-DTL-26482 Series II Crimp (MS3470-MS3476)**
- ▶ MIL-DTL-5015 Solder (MS3100-MS3108)
- ▶ MIL-DTL-5015 Crimp Front Release (MS3400-MS3412)**
- ▶ MIL-DTL-5015 Crimp Rear Release (MS3450-MS3459)**
- ▶ MIL-DTL-38999 Series I Crimp (MS27466-MS27652)**
- ▶ MIL-DTL-38999 Series II Crimp (MS27472-MS27508)**
- ▶ MIL-DTL-38999 Series III Crimp (D38999/20-26)
- ▶ MIL-DTL-22992 MIL-SPEC Compatible Class L (CD90555-CD90558)
- ▶ Corsair Aircraft External Power Receptacles (MS90362, MS3506-1, MS17845)

MIL-SPEC Contacts

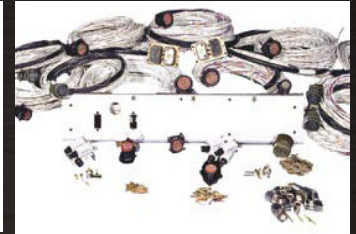
- ▶ MIL-DTL 39029
- ▶ Coaxial
- ▶ Wire-Wrap®
- ▶ Printed Circuit
- ▶ Thermocouples
- ▶ Pins & Sockets

Filter Connectors

- ▶ MIL-DTL-5015
- ▶ MIL-DTL-26482
- ▶ MIL-DTL-26500
- ▶ MIL-DTL-38999
- ▶ MIL-DTL-24308

Connector Accessories

- ▶ Backshells
- ▶ Cable Clamps
- ▶ Dummy Receptacles
- ▶ Dust Caps
- ▶ EMI/RFI
- ▶ Mounting Brackets
- ▶ Rubber Bushings
- ▶ Sealing Plugs
- ▶ Strain Reliefs
- ▶ Custom Design Accessories



Cable Assemblies & Wire Harnesses

- ▶ Harsh Environment and Watertight Assemblies
- ▶ Custom Molded Assemblies
- ▶ Overmolding Capabilities
- ▶ Insert Molding, Grommets and Various Molded Parts
- ▶ EMI/RFI Shielded Assemblies
- ▶ Crimp or Solder Terminations
- ▶ Control Panel
- ▶ Power Distribution
- ▶ Coaxial/RF
- ▶ Test Cables

PC Board Mount Components

- ▶ PC Board & PC Tail Connectors
- ▶ Power Converters
- ▶ Power Supplies

Kitting & Assembly

- ▶ Wire Stripping
- ▶ Wire Marking
- ▶ Wire Markers & Heat Shrink Labels
- ▶ Tin Dipping
- ▶ Special Packaging
- ▶ Component & Electrical Assemblies

Certifications

- ▶ IPC/WHMA-A-620A Cable and Wire Harness Assembly
- ▶ ISO 9001:2008 (Certificate #3228)
- ▶ ITAR Registered
- ▶ J-STD-001 Soldered Electrical and Electronic Assemblies
- ▶ NAICS CODES - 332721 | 334417 | 334419 | 335931 | 423610 | 541330 | 335911 | 335912 | 423120 | 423610
- ▶ SIC CODES - 8711 | 3670 | 3678 | 3679 | 3690 | 3691 | 3692

Custom Manufacturing Solutions - Quality You Can Rely On

Manufacturers

Amp	DMC-Daniels Tool	Radiall
Amphenol	Deutsch	Raychem
Aero-Conesys	Eaton	*Resistacap Energy Products
Alpha Wire	Easterline-Leach	RMS
AVX-Elco	Electroswitch	Souriau
Belden	General Cable	Sumitomo
Burndy	Glenair	Sunbank
Carol Cable	Hubbell	T E Connectivity
Cinch	ITT Cannon	Thomas & Betts
** Corsair	Kings	Tristar-Carlisle
Crouse-Hinds	*Martek Power	Trompeter-Emerson
Crown Connector	*Micro Power	Veam
DDK	Nexus	

**Denotes Value-Added Franchise*

***QPL Approved Value-Add Distributor*

Industries Served

CDI specializes in the design, manufacture, and distribution of active, passive and electro mechanical products. CDI services to customers in many different industries.



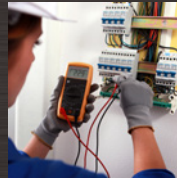
Department of Defense



Commercial & Industrial



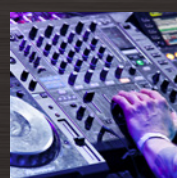
Robotics & Transportation



Medical Equipment



Harsh Environment



Entertainment, Sound & Lighting



Rail & Transit

CDI offers reverse engineering, redesign and retrofit services for sole source and obsolete products as a cost-effective solution for your organization. With over 30 years of proven success, CDI has DOD experience, a quick production response and unsurpassed quality control. As a woman-owned small business, CDI can help you fulfill minority contractor requirements without compromising the quality of your deliveries on DOD contracts.